

# A & M Sculptured Lighting

1781 N. Indiana Street Los Angeles, CA., 90063 (323)263-2221 Fax (323)263-2226



## LAA, LAB, LAK

### S E R I E S

This versatile, architectural luminaire is supplied with different wattages and lamp types. The efficient specular aluminum reflector is available on Type 3, FT and 5 light distributions. This fixture will meet the dark sky requirements.

ARCHITECTURAL 



The housing and the lens frame are made of die-cast aluminum. The arm is made of 1/8" thick extruded aluminum. The two piece bracket is fabricated from 1/8" thick steel bar and knuckle is made of 1/8" thick cast aluminum.

The lamp is horizontally mounted, properly positioned to provide the appropriate IES light pattern.

All electrical components are UL listed with electromagnetic high power factor ballast for HID lamps in voltages of 120 to 480 or an electronic ballast for compact fluorescent lamp in 120 or 277 volts. Ballasts are mounted on a removable tray for easy maintenance.



*A & M Sculptured Metals*

UL LISTED FOR WET LOCATIONS

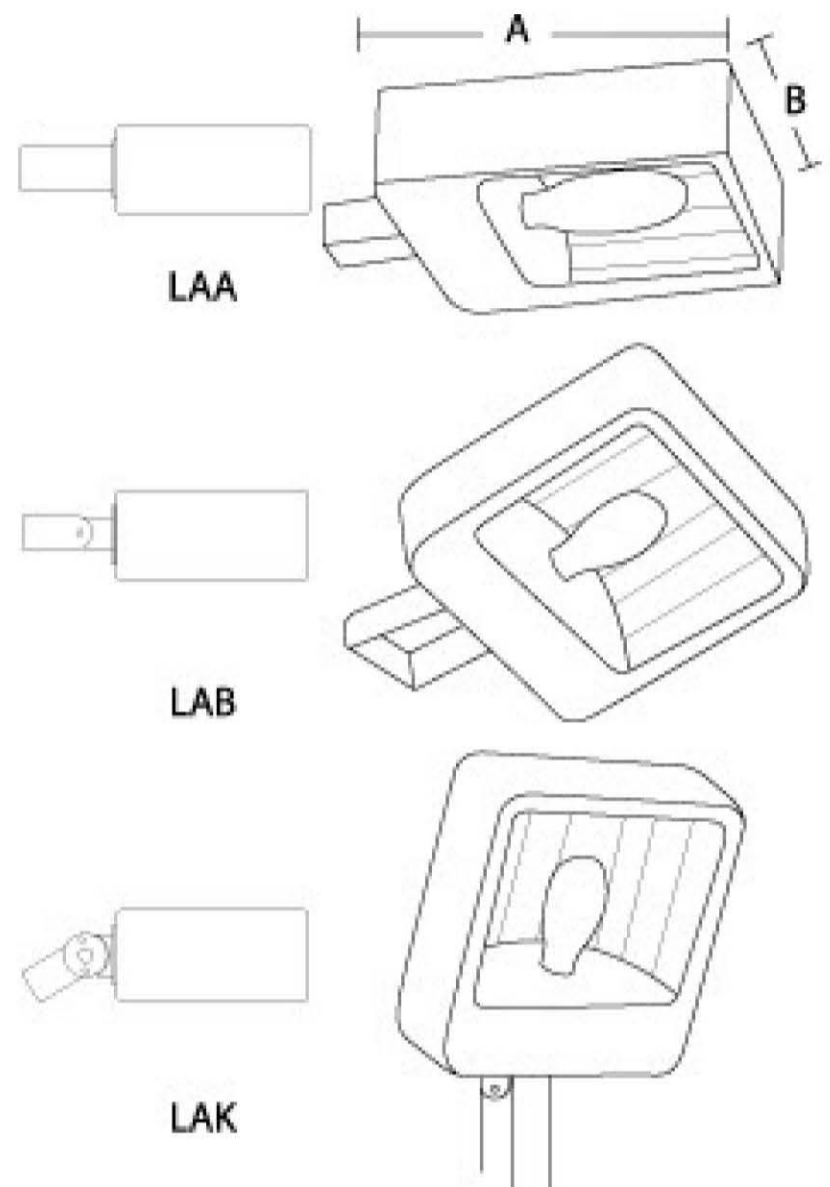
[www.amsculptedmetals.com](http://www.amsculptedmetals.com)

# A & M Sculptured Lighting

1781 N Indiana Street Los Angeles, CA, 90063  
Tel (323)263-2221 Fax (323)263-2226

LAA, LAB, LAK  
SERIES

- Housing:** Die cast aluminum. Closed cell neoprene foam gasket is applied between lens frame and housing.
- Lens:** .188 thick clear tempered glass. Lens frame is hinged and secured with two stainless steel fasteners.
- Reflector:** Specular aluminum, available on type 3, FT and VS light distribution.
- Electrical:** All electrical components are UL approved.
- Ballast:** High power factor - 20°C starting temp. The ballast is removable as a unit for easy maintenance.
- Finish:** Polyester powder fuse coating is standard; other finishes are available upon request.

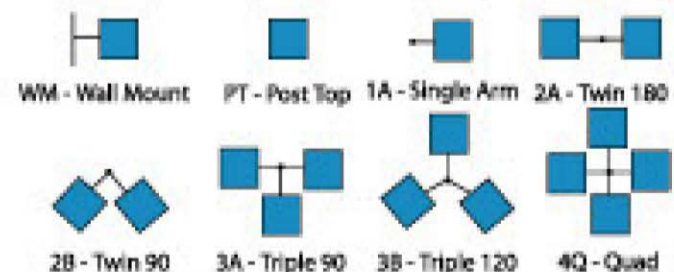


## Ordering Information:

1. Model Number
2. Wattage
3. Lamp Type  
H - Metal Halide  
S - High Pressure Sodium  
PS - Pulse Start
4. Voltage  
120, 208, 240, 277, 480 and  
MT (Multi Tap) - 120, 208, 240, 277
5. Mounting
6. Finish  
BZ - Bronze  
( Other colors upon request )
7. Options  
HS - House Shield  
FS - Fuse  
PC - Photo Cell

MOD#	WATTAGE	A	B	EPA
LAA, LAB, LAK	400 MAX	16"SQ.	7"	1.12
	1000 MAX	22"SQ.	10"	1.87

## Mounting



1. Mod. #	2. Wattage 3. Lamp Type	4. Voltage	5. Mounting	6. Finish	7. Options